



GMT MONTHLY MEMBERSHIP PROGRESS REPORT

Results as of: 2/29/2024

Multiple District 410

LOCATION: REP OF SOUTH AFRICA

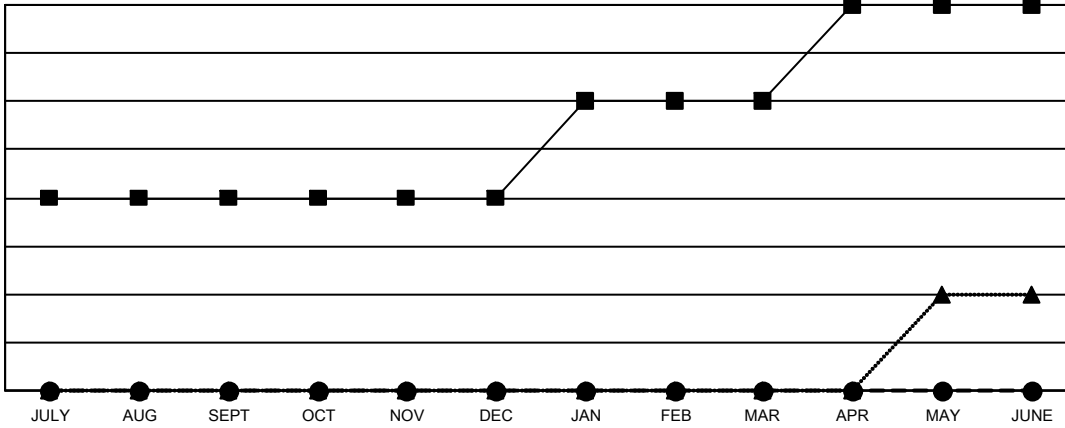
GMT: OPEN

GMT CA 8

| Clubs | | | |
|-----------------------|---------------|-----------|---------------|
| RESULTS FOR 2023-2024 | | | |
| QUARTER | NEW CLUB GOAL | NEW CLUBS | DROPPED CLUBS |
| JULY/AUG/SEPT | 2 | 0 | 2 |
| OCT/NOV/DEC | 0 | 0 | 2 |
| JAN/FEB/MAR | 1 | 0 | 0 |
| APR/MAY/JUNE | 1 | 0 | 0 |

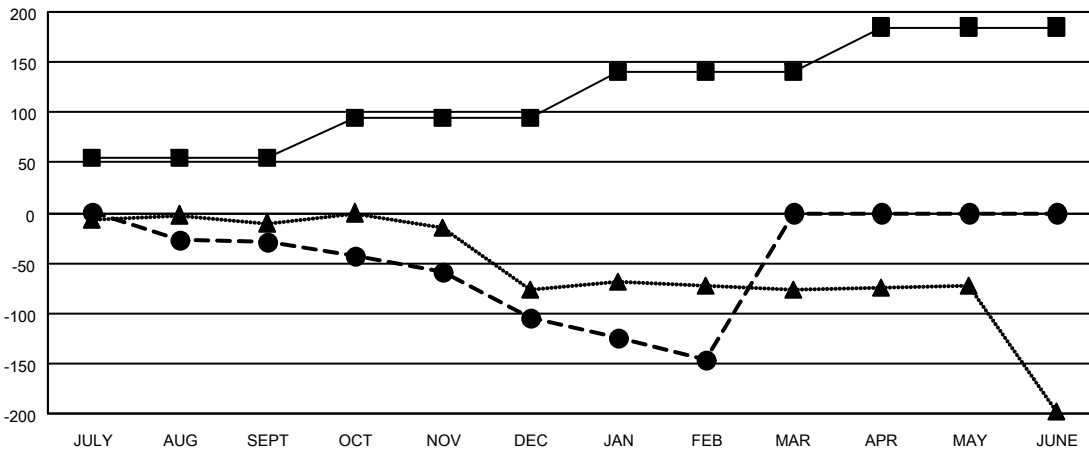
| Members | | | |
|-----------------------|------------------------|----------------------|--|
| RESULTS FOR 2023-2024 | | | |
| QUARTER | MEMBER GROWTH NET GOAL | MEMBER GROWTH ACTUAL | DROPPED MEMBERS ACTUAL (including transfers) |
| JULY/AUG/SEPT | 55 | 84 | 83 |
| OCT/NOV/DEC | 40 | 55 | 117 |
| JAN/FEB/MAR | 45 | 22 | 59 |
| APR/MAY/JUNE | 45 | 0 | 0 |

GOALS AND ACTUAL NEW CLUBS CUMULATIVE



- - CURRENT YEAR GOALS FOR NEW CLUBS
- - CURRENT YEAR ACTUAL NEW CLUBS
- ▲ - LAST YEAR ACTUAL NEW CLUBS

GOALS AND ACTUAL MEMBERS CUMULATIVE



- - MEMBER GROWTH NET GOAL
- - MEMBER GROWTH ACTUAL
- ▲ - LAST YEAR MEMBERSHIP ACTUAL

| | | |
|------------------------|---|-------------------------------------|
| DROPPED CLUBS: 4 | 52 CLUBS OF 123 ADDED 1 OR MORE NEW MEMBERS | GENDER DISTRIBUTION |
| | | MALE 895 (51.47%) |
| | | FEMALE 844 (48.53%) |
| DROPPED MEMBERS | CLICK HERE FOR CUMULATIVE MEMBERSHIP DATA | TOTAL FAMILY UNIT MEMBERS 474 |
| DECEASED 20 | | FAMILY MEMBERS PAYING HALF DUES 249 |
| CLUB CANCELLED 7 | | |
| OTHER 232 | | |
| TOTAL 259 | | |